

Down by the Sally Gardens

W.B. Yeats

D A G D

It was down by the Sal - ly Gar - dens, m - y

4 G A D

love a - nd I did meet. She -

6 A G D

crossed th - e Sal - ly Gar - dens wi - th

8 G A D

lit - tle snow - white feet. She

10 Bm A F#m

bid me - take love ea - sy, as the

Detailed description: This block contains the first two measures of music. Measure 10 starts with a treble clef and a key signature of two sharps (F# and C#). The notes are G4, A4, B4, and C5. Measure 11 continues with D5, E5, F#5, and G5. Chord diagrams are provided below each note: G (x02320), A (x02020), Bm (x21202), C# (x2341), D (x02320), E (x02210), F#m (x2341), G (x02320), A (x02020), and B (x21202).

12 G A D

leaves grow u - po - n th - e tree. But -

Detailed description: This block contains measures 12 and 13. Measure 12 notes: G4, A4, B4, C5. Measure 13 notes: D5, E5, F#5, G5. Chord diagrams: G (x02320), A (x02020), B (x21202), C# (x2341), D (x02320), E (x02210), F#m (x2341), G (x02320), A (x02020), and D (x02320).

14 A G D

I wa - s yound a - nd foo - lish, and -

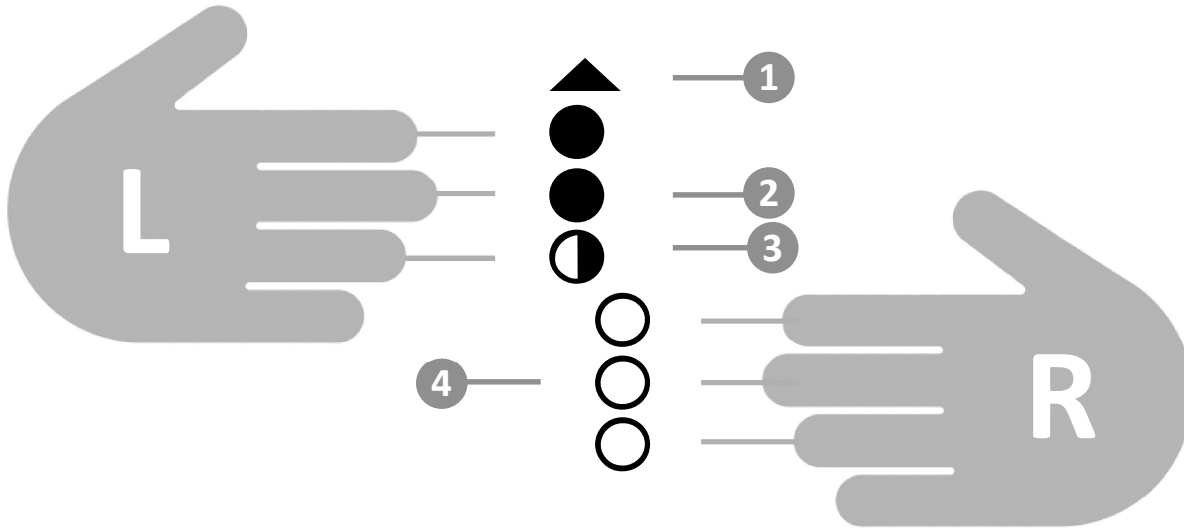
Detailed description: This block contains measures 14 and 15. Measure 14 notes: G4, A4, B4, C5. Measure 15 notes: D5, E5, F#5, G5. Chord diagrams: G (x02320), A (x02020), B (x21202), C# (x2341), D (x02320), E (x02210), F#m (x2341), G (x02320), A (x02020), and D (x02320).

16 G A D

with her did not a - gree.

Detailed description: This block contains measures 16 and 17. Measure 16 notes: G4, A4, B4, C5. Measure 17 notes: D5, E5, F#5, G5. Chord diagrams: G (x02320), A (x02020), B (x21202), C# (x2341), D (x02320), E (x02210), F#m (x2341), G (x02320), A (x02020), and D (x02320).

Griffe & Symbole / fingerings & symbols



- 1 überblasen
overblow
- 2 Loch geschlossen
hole closed
- 3 Loch halb geschlossen
hole half closed
- 4 Loch offen
hole open

The image shows two musical staves with corresponding fingering diagrams. The first staff contains a sequence of 12 notes: G4, A4, B4, C5, D5, E5, F5, G5, A5, B5, C6, D6. The second staff contains a sequence of 12 notes: G4, A4, B4, C5, D5, E5, F5, G5, A5, B5, C6, D6. Below each staff are 12 fingering diagrams, each corresponding to a note. The diagrams use the symbols defined in the legend to show which holes are closed, half-closed, or open for each note.

Noten & Symbole / notes & Symbols

The image shows a musical score for the song 'Ein Männlein steht im Walde ganz'. The score is written in G major (one sharp) and 4/4 time. It consists of two staves. The first staff contains the melody and lyrics: 'Ein Männlein steht im Walde ganz'. The second staff contains rhythmic notation for the same lyrics. Numbered callouts (1-18) point to specific musical symbols: 1. Treble clef, 2. Sharp sign, 3. 4/4 time signature, 4. First measure, 5. Bar lines, 6. Chord 'G', 7. Lyrics, 8. Fingerings, 9. Eighth notes, 10. Quarter note, 11. Half note, 12. Whole note, 13. Dotted note, 14. Note with tie, 15. Eighth rest, 16. Quarter rest, 17. Eighth rest, 18. Half rest.

- | | |
|---|---|
| 1 Notenschlüssel - die Tonhöhe der Notenlinien <i>Clef - the pitch of the five lines</i> | 10 Viertelnote - ein Ton pro Schlag <i>Quarter note - one note per beat</i> |
| 2 Vorzeichen - Tonart des Liedes <i>Accident - key of the song</i> | 11 Halbe Note - ein Ton, zwei Schläge lang <i>Half note - one tone, two beats long</i> |
| 3 Taktart - Schläge pro Takt <i>Time signature - beats per bar</i> | 12 ganze Note - ein Ton, vier Schläge lang <i>Whole note - one tone, four beats long</i> |
| 4 Auftakt - unvollständiger Takt am Beginn <i>Prelude - incomplete measure at the beginning</i> | 13 punktierte Note - Note um 50% verlängert <i>Dotted note - note extended by 50%</i> |
| 5 Taktstriche - regelmässige Aufteilung des Liedes <i>Bar lines - regular division of the song</i> | 14 Note mit Haltebogen verlängert <i>Note extended with a tie</i> |
| 6 Begleitakkorde für Piano oder Gitarre... <i>Accompanying chords for piano or guitar...</i> | 15 weitere Darstellung einer Achtelnote <i>another representation of an eighth note</i> |
| 7 Liedtext - dient auch zur rhythm. Orientierung <i>Lyrics - also used for rhythm. orientation</i> | 16 Achtelpause <i>Eighth rest</i> |
| 8 Griffbilder <i>Fingerings</i> | 17 Viertelpause <i>Quarter rest</i> |
| 9 Achtelnote - zwei Töne pro Schlag <i>Eighth note - two notes per beat</i> | 18 Halbe Pause <i>Half rest</i> |

Videos mit Detailerklärungen sind **Online bei den Sounds** zu finden.

Videos with detailed explanations can be found **online** under the sounds.