

Rondo

T. Susato, ca 1550

C G

Diagrammatic notation for staff 1: A series of 11 vertical columns of circles. Each column has four circles in the bottom row and three in the top row. The top-right circle of each column is filled (black), while the others are empty (white). The filled circles correspond to the notes C, D, E, F, G, F, E, D, C in the melody above.

3 C

Diagrammatic notation for staff 2: A series of 11 vertical columns of circles. Each column has four circles in the bottom row and three in the top row. The top-right circle of each column is filled (black), while the others are empty (white). The filled circles correspond to the notes C, D, E, F, G, F, E, D, C in the melody above.

5 G

Diagrammatic notation for staff 3: A series of 11 vertical columns of circles. Each column has four circles in the bottom row and three in the top row. The top-right circle of each column is filled (black), while the others are empty (white). The filled circles correspond to the notes C, D, E, F, G, F, E, D, C in the melody above.

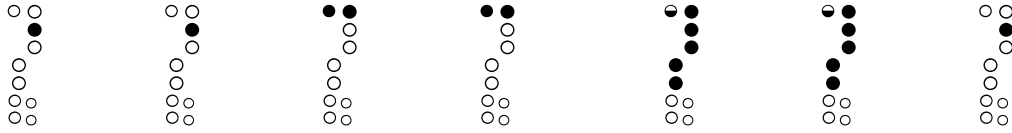
7 C G C

Diagrammatic notation for staff 4: A series of 11 vertical columns of circles. Each column has four circles in the bottom row and three in the top row. The top-right circle of each column is filled (black), while the others are empty (white). The filled circles correspond to the notes C, D, E, F, G, F, E, D, C in the melody above.

9




Musical staff for measure 9, starting with a treble clef. The notes are G4, A4, B4, C5, F4, G4, and C4. Chord symbols 'F' and 'C' are placed above the staff.

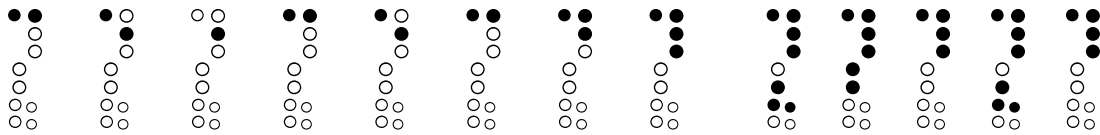


Seven fingering diagrams for measure 9, each showing a vertical sequence of circles representing strings. The first two diagrams have one black dot on the second circle. The next two have two black dots on the second and third circles. The last two have two black dots on the second and third circles, and one on the fourth circle.

11



Musical staff for measure 11, starting with a treble clef. The notes are G4, A4, B4, C5, F4, G4, A4, B4, G4, F4, G4, A4, B4, C5, and C4. Chord symbols 'F', 'G', and 'C' are placed above the staff.

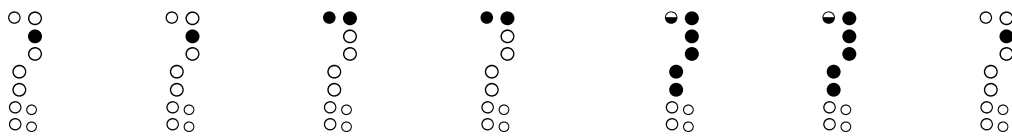


Fourteen fingering diagrams for measure 11, each showing a vertical sequence of circles representing strings. The diagrams correspond to the notes in the staff above, with black dots indicating finger placement.

13



Musical staff for measure 13, starting with a treble clef. The notes are G4, A4, B4, C5, F4, G4, and C4. Chord symbols 'F' and 'C' are placed above the staff.

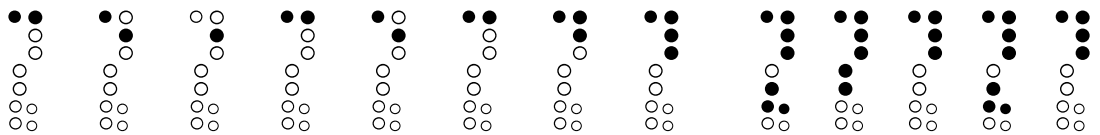


Seven fingering diagrams for measure 13, each showing a vertical sequence of circles representing strings. The first two diagrams have one black dot on the second circle. The next two have two black dots on the second and third circles. The last two have two black dots on the second and third circles, and one on the fourth circle.

15

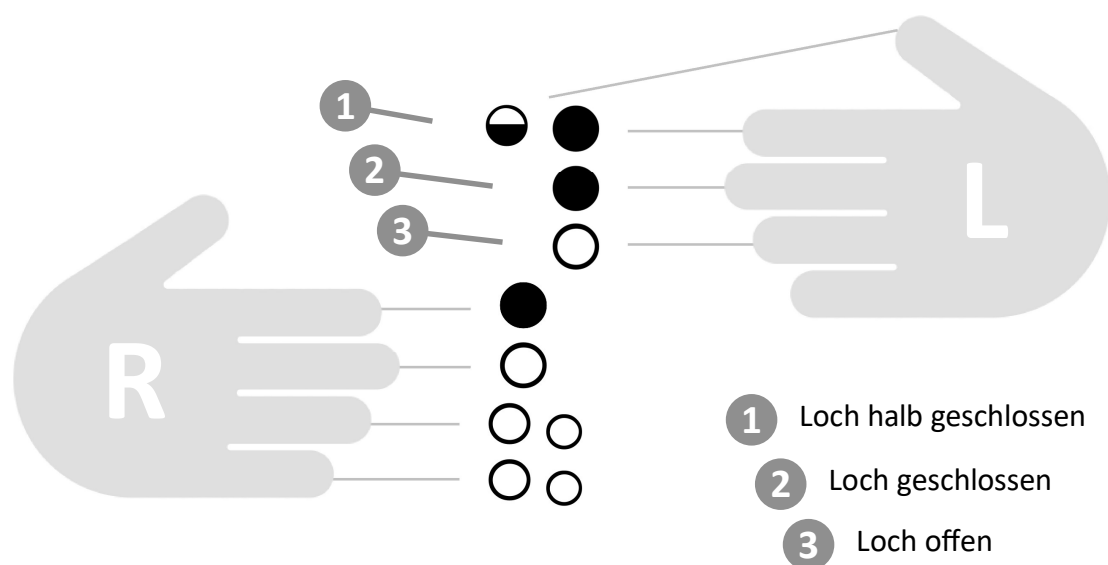


Musical staff for measure 15, starting with a treble clef. The notes are G4, A4, B4, C5, F4, G4, A4, B4, G4, F4, G4, A4, B4, C5, and C4. Chord symbols 'F', 'G', and 'C' are placed above the staff.



Fourteen fingering diagrams for measure 15, each showing a vertical sequence of circles representing strings. The diagrams correspond to the notes in the staff above, with black dots indicating finger placement.

Die Griffe



The first staff shows a sequence of notes in 4/4 time: G4, A4, B4, C5, B4, A4, G4, F4, E4, D4, C4. The second staff shows notes: D4, E4, F4, G4, A4, B4, C5, B4, A4, G4, F4, E4, D4. Below each staff are fretboard diagrams showing the fingerings for each note.

Die Griffbilder können je nach Hersteller minimal variieren.

Noten, Notenwerte & Symbole

The image shows a musical score for the song 'Ein Vogel wollte Hochzeit machen'. The score is written on a single staff in 4/4 time, with a key signature of one flat (B-flat). The lyrics are: 'Ein Vogel wollte Hochzeit machen'. The score includes various musical symbols such as a treble clef, a key signature, a time signature, and various note values (quarter, half, whole, dotted, and eighth notes). There are also rests (quarter and half). Below the staff, there are 18 numbered callouts (1-18) pointing to specific musical symbols and lyrics. Callout 1 points to the treble clef, 2 to the key signature, 3 to the time signature, 4 to the first measure, 5 to the bar lines, 6 to the chord symbols 'F' and 'C', 7 to the lyrics, 8 to the fingering diagrams, 9 to the first eighth note, 10 to the second eighth note, 11 to the half note, 12 to the whole note, 13 to the dotted quarter note, 14 to the eighth note with a slur, 15 to the eighth note with a slur, 16 to the eighth rest, 17 to the quarter rest, and 18 to the half rest.

- | | |
|--|---|
| 1 Notenschlüssel - die Tonhöhe der Notenlinien | 10 Viertelnote - ein Ton pro Schlag |
| 2 Vorzeichen - Tonart des Liedes | 11 Halbe Note - ein Ton, zwei Schläge lang |
| 3 Taktart - Schläge pro Takt | 12 ganze Note - ein Ton, vier Schläge lang |
| 4 Auftakt - unvollständiger Takt am Beginn | 13 punktierte Note - Note um 50% verlängert |
| 5 Taktstriche - regelmässige Aufteilung des Liedes | 14 Note mit Haltebogen verlängert |
| 6 Begleitakkorde für Piano oder Gitarre... | 15 weitere Darstellung einer Achtelnote |
| 7 Liedtext - dient auch zur rhythm. Orientierung | 16 Achtelpause |
| 8 Griffbilder für Blockflöte | 17 Viertelpause |
| 9 Achtelnote - zwei Töne pro Schlag | 18 Halbe Pause |

Videos mit Detailerklärungen sind **Online bei den Sounds** zu finden.